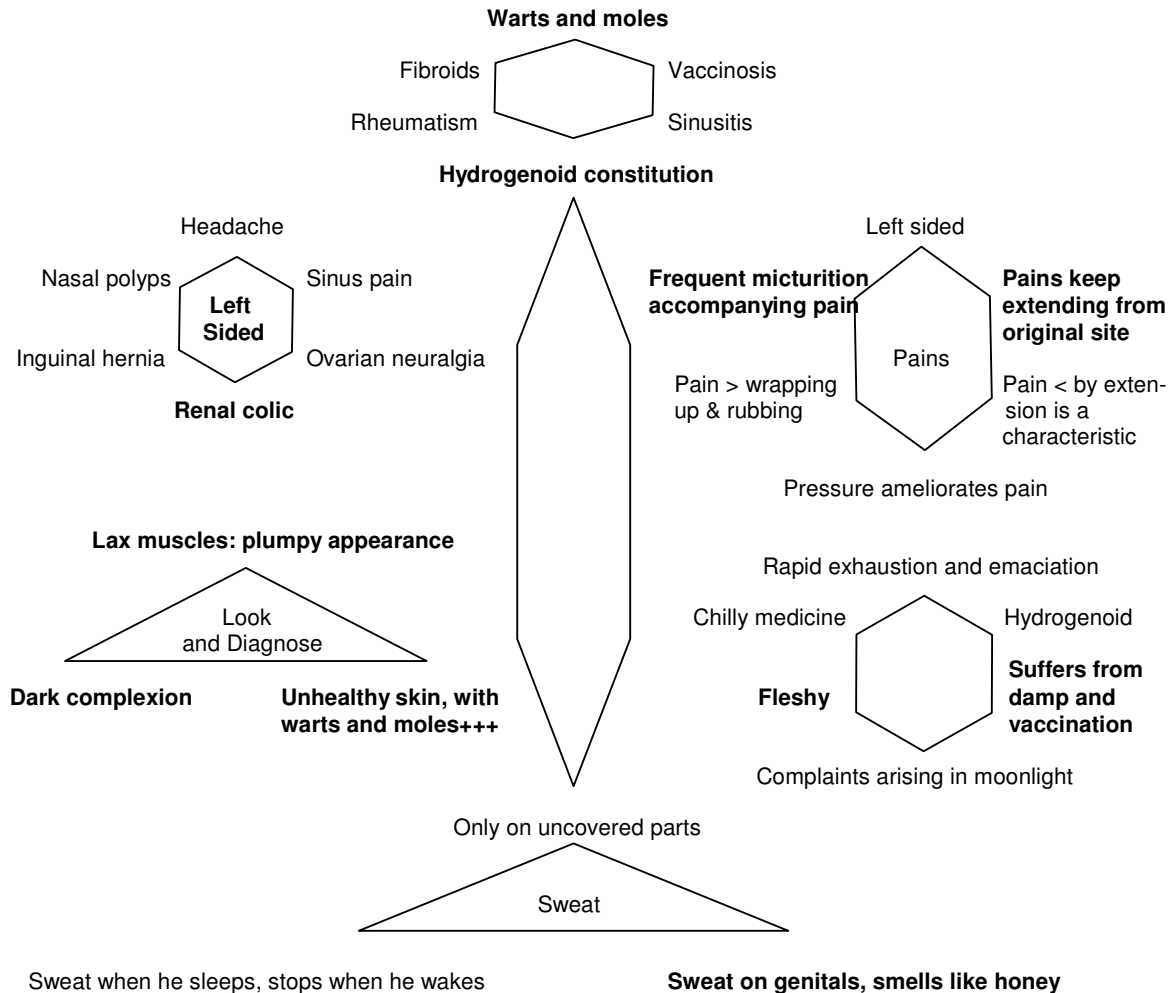




## 11) **THUJA**

### A. **PHYSICAL THEME**

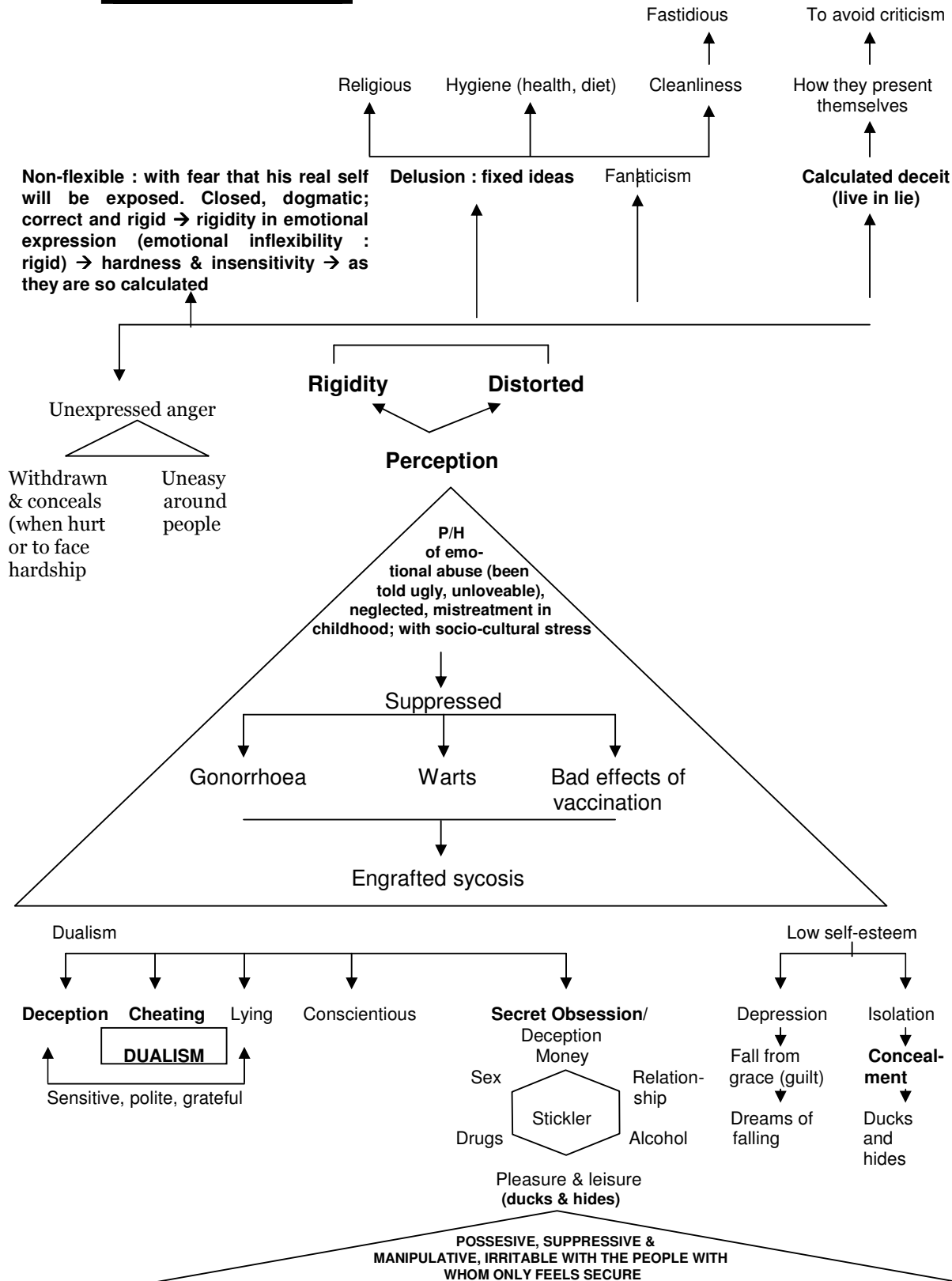


#### Physical Clinicals:

1. Warts, condylomas; skin tags; naevi;
2. Tumours including adenomas; fibromas and fibro-myomas;
3. Urinary Tract Infections (U.T.I);
4. Chronic headaches;
5. Nasal Polyps;
6. Acute & Chronic Gastro-enteritis;
7. Osteo-arthritis.



## B. **MENTAL ESSENCE**

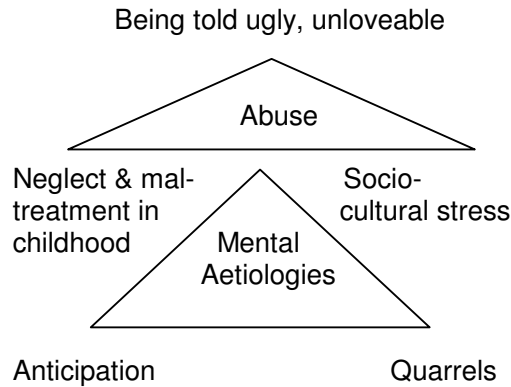


Guard; conceal. Natrum Muriaticum wall themselves off. Lycopodium and Silica will try to avoid things, but Thuja feels trapped and the best thing they can do is conceal themselves

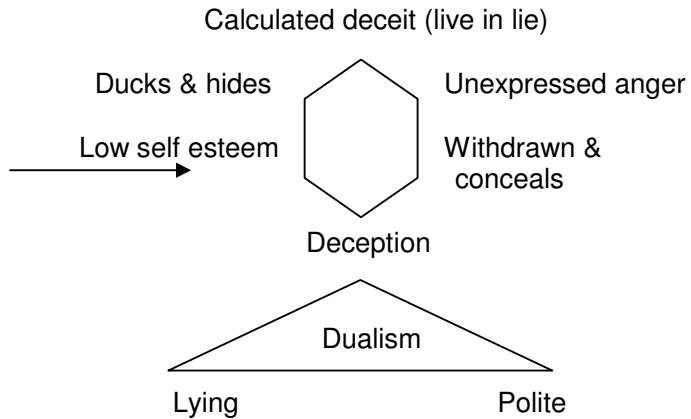
Mistrust; distorted



## MENTAL AETIOLOGIES



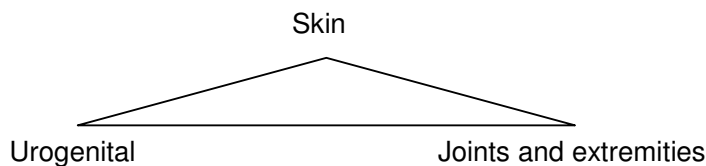
## PSYCHIC MANIFESTATIONS



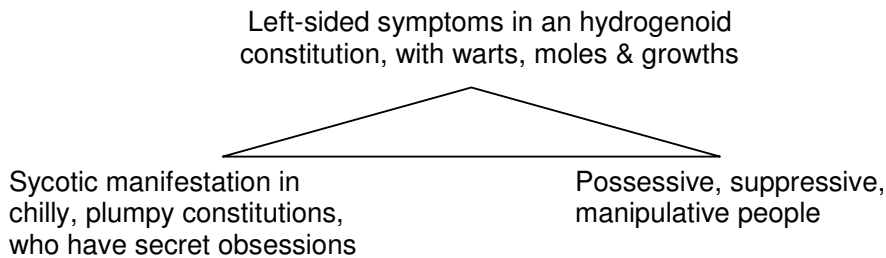
### **Mental Clinicals:**

1. Anxiety Neurosis;
2. Fear Psychosis;
3. Delusion & Hallucination;
4. Obsessive Compulsive Disorders (O.C.D);
5. Manipulative behaviours.

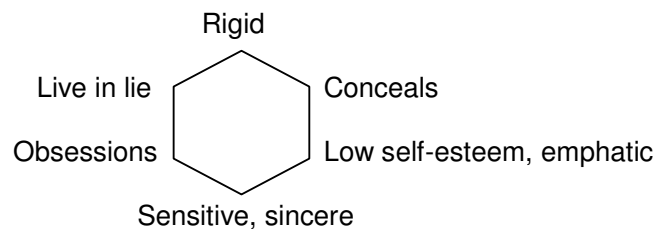
### **C. SPHERE OF ACTION: WEAKEST LINKS**



### **D. CATCH WORDS: KEYNOTES**



### **E. KEYWORDS FOR PERSONALITY PROFILE**





## F. **POTENCY OF CHOICE**

- i) Headache: 200 C.
- ii) Eyes : 30 C, 200 C.
- iii) Nose : 200 C, 1 M.
- iv) Abdomen : 200 C.
- v) Urinary : 200 C.
- vi) Rheumatism : 30 C.
- vii) Skin : 30 C.
- viii) Emotional : 1 M, 10 M.
- ix) Mental : 1M.

*Acute as well as Chronic medicine.*

## G. **MIASMATICS OF THUJA**

Psora ++, Sycotic +++, Syphilis ++, Tubercular ++.

## H. **CLINICAL TIPS**

Lax, plumpy, ganeshji appearance where the trunk represents extra growths, who suffers from osteoarthritis which aggravates from damp; in deceitful people who have secret obsessions.